

sdmay19-18: Real time Route Optimization

Week 9 Report

November 12- November 18

Team Members

Junjie Wen — *Backend Developer; Data Analyst*

Zhanghao Wen — *Product Manager; Technical Writing; Weekly Status Report*

Yuhang Xie — *Web Developer; UI Designer*

Xinhe Yang — *Web Developer; UI Designer*

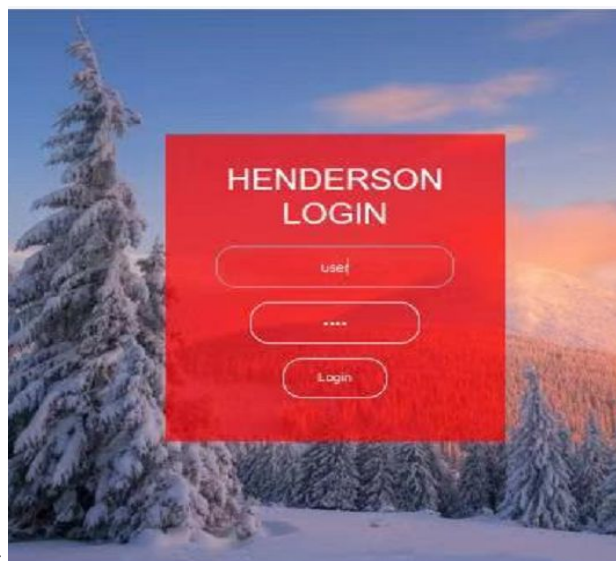
Tianhao Zhao — *Communication Leader*

Summary of Progress this Report

- Public and admin group now have different access to the map view after they login (default view is public view).
 - Tracking our progress to be on the same page, plan for next semester.
 - Created outline for our presentation and PPT
-

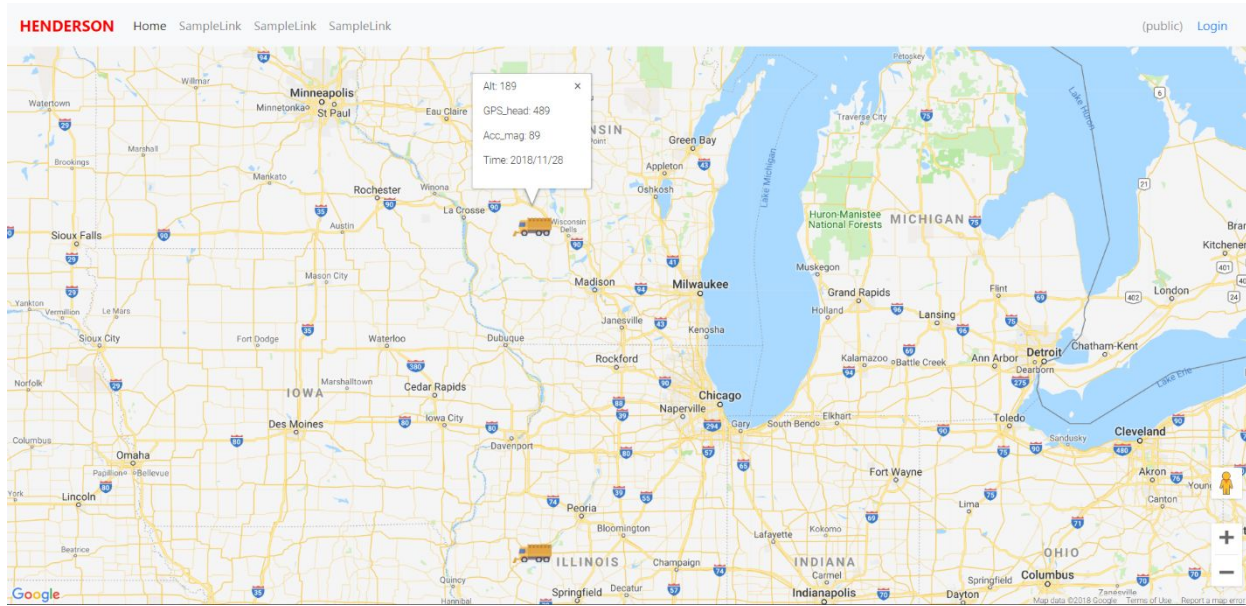
Past Week Accomplishments

We implement the router with multiple models so that different groups of people have different access and different views on map on our main page of websites. Public view and admin's view are pretty much done and we will finish up users' view in the future (We haven't distinguish the main differences for users' view and admin view).



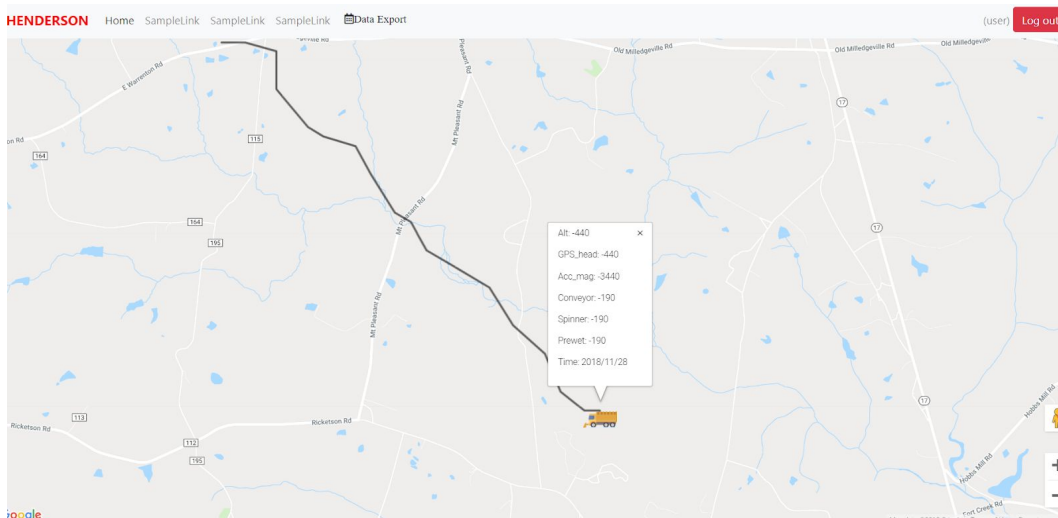
Here is what a login page look like:

- For public view: only trucks' icon is displayed, and public could know the direction of truck if the truck is moving continuously. The top-right corner shows that the user has default "public" view. The zoom scale of this map is pretty big, however, the size of icon remain unchanged if user zoom in to get precise location of truck.



- For admin/user view: Admin managers can access all information in our design, road conditions, truck's path, truck information (e.g. altitude, GPS, acceleration, conveyor speed, spinner speed). The top-right corner of figure below shows that the it has logged in as user, and we have nothing for road conditions to show on our map now.

The values here is not 100% make sense, because we used simulator to generate data rather than real data collected from sensor equipment on the trucks.



Pending Issues

1. Store, and present history data of fleets.
 2. Prepare final presentation for the first semester.
 3. Documentation: revise project plan, design document, weekly reports.
-

Plans for Upcoming Reporting Period

1. First, we will focus on preparing our final presentation, and after that, we still have a couple of days before the end of this semester to either polishing our existing code or implement small features.
 2. Currently we are able to display raw data from server directly without any storage and analysis process. We are going to work on displaying the data after analyzed the raw data, which requires both backend computation and front-end display.
 3. We will end up our first semester's design for the rest of semester.
-

Individual Contributions

Team Member	Contribution	Weekly Hours	Total Hours
Junjie Wen	Meeting, prepare final presentation	2	62
Zhanghao Wen	Weekly report, prepare final presentation	2	70
Yuhang Xie	Meeting, Research and sketch work for front end	5	66
Xinhe Yang	Meeting, prepare final presentation	2	60
Tianhao Zhao	Tracking our steps to be on the same page, prepare final presentation, manage all files on cloud.	3	55

Gitlab Activity Summary

Code is committed to members' local repository.
